

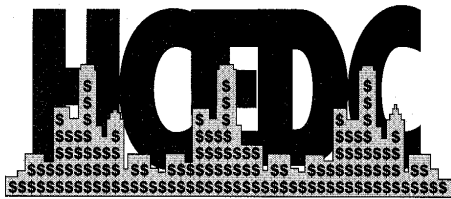
---

---

# HUDSON COUNTY

## ECONOMIC AND DEMOGRAPHIC PROFILE

2012



Hudson County Economic Development Corp.

County Plaza  
257 Cornelison Ave. 7<sup>th</sup> Floor  
Jersey City, NJ 07302  
Phone: 201- 369-4370  
**Fax: 201- 369-4371**  
[www.hudsonedc.org](http://www.hudsonedc.org)

# TABLE OF CONTENTS

---

<b>HUDSON COUNTY EDC INFO.....</b>	<b>1</b>
<b>HUDSON COUNTY BROWNFIELDS.....</b>	<b>2</b>
Brownfield finished projects.....3	4
<b>LOAN PROGRAMS.....</b>	
<b>COUNTY CENSUS TRACT MAP.....</b>	<b>5</b>
<b>COUNTY GOVERNMENT.....</b>	<b>6</b>
County Budget.....7	
Registered Voters.....7	
<b>POPULATION.....</b>	<b>8</b>
Municipal Populations/2010 Unemployment Rates.....8	
County Populations.....9	
<b>EDUCATION AND CHILD CARE.....</b>	<b>10</b>
<b>HOSPITALS.....</b>	<b>11</b>
<b>LIBERTY SCIENCE CENTER.....</b>	<b>12</b>
<b>MEDIA.....</b>	<b>13</b>
Newspapers.....13	
Electronic.....14	
<b>TRANSPORTATION.....</b>	<b>15</b>
Major Arteries.....15	
Rail and Path.....16	
Bus Information.....17	
Newark International Airport.....18	
<b>ECONOMIC AND EMPLOYMENT DATA.....</b>	<b>19</b>
<b>HUDSON COUNTY REAL ESTATE.....</b>	<b>20</b>
<b><u>MUNICIPALITIES</u></b>	
Bayonne.....	21
East Newark.....	22
Guttenberg.....	23
Harrison.....	24
Hoboken.....	25
Jersey City.....	26
Kearny.....	27
North Bergen.....	28
Secaucus.....	29
Union City.....	30
Weehawken.....	31
West New York.....	32

# Hudson County Economic Development Corporation

## Giving Business a Helping Hand

---

The Hudson County Economic Development Corporation is a not for profit organization serving Hudson County. We have an active Board of Trustees representing a cross section of business, labor, community and local government.

### ❖ Finance

The HCEDC, in close cooperation with local Financial Institutions and the New Jersey EDA, will assist your company in loan packaging, often at below market rates. Our Business Loan Program (BLP) is designed to help businesses that are established and promising, yet unable to obtain conventional financing. Eligible uses include working capital, the purchase of new machinery or equipment, and the purchase or renovation of business property in Hudson County.

### ❖ Ombudsman Services

Sometimes it is helpful to know where to call to solve a business problem. The Hudson County Economic Development Corporation maintains a close association with prominent businesses and organizations within the County, as well as governmental agencies on the local, state and federal level. We stand ready to help.

### ❖ Research Information and Demographics

To assist you in making an informed business decision, the Hudson County Economic Development Corporation serves as NJ State Data Center Affiliate, providing the most up to date census, business and industrial data available. We also produce comprehensive reports and demographics specific to the County. These include vital statistics on major employers, income trends, UEZ Zones and tax rates for all 12 municipalities.

### ❖ Site Location

Your decision to locate or relocate in Hudson County is based on your business property requirements. We provide individualized property searches taking all your requirements into consideration.

### ❖ Internet Accessibility

If you have access to the Internet, many of the services and publications of the Hudson County Economic Development Corporation may be found at our website: [www.hudsonedc.org](http://www.hudsonedc.org). There you can browse our publications, download data, send us email, and see photos and articles on the latest news from our office.

# Hudson County Economic Development Corporation Giving Business a Helping Hand

---

## BROWNFIELDS

Brownfield present a unique opportunity for development and growth in Hudson County. The County has created a new pattern for redevelopment by transforming blighted, underutilized and potentially contaminated Brownfield sites into beautiful and productive properties that promote job creation, economic growth and much needed green space for residents. The Hudson County Economic Development Corporation (HCEDC) has played a significant role in the redevelopment of Brownfield in Hudson County. Thanks to the HCEDC many former Brownfield properties are now thriving as productive businesses, development properties, residential communities and parks.

A diverse group of concerned citizens came together in 1998 to form the Hudson County Stakeholders. The group has successfully managed the award winning Hudson County Brownfield Program for over 10 years. Today, the Stakeholders continue to make significant contributions to Brownfield redevelopment throughout the County.

In 2000, the Hudson County Brownfield Stakeholders were awarded the New Jersey Department of Environmental Protection's first ever Environmental Excellence Award for Open and Effective Government.



The Hudson County Economic Development Corporation won a grant from the New Jersey Department of Community Affairs for \$150,000 to develop a "Comprehensive Brownfield Redevelopment Plan". This document overlay the Area wide process and documents the redevelopment process and the outcomes. The Plan was released in March 2008 and won the American Planners Association (New Jersey Chapter) Planning Achievement Award for 2008. The document can be downloaded from the Hudson County Economic Development Corporation's website at [www.hudsonedc.org](http://www.hudsonedc.org)

### Projects

507 Elm Street, Kearny, New Jersey this former tool and die shop was located in a residential neighborhood. Through the efforts of the town and the USEPA Pilot, the onsite building was demolished and all environmental investigations concluded. Funds were leveraged by partnering with United States Housing and Urban Development, Community Development Block Grant funds, USEPA, NJDEP, New Jersey Green Acres funds and private contributors. The site was redeveloped as a toddler park and opened in July 2003



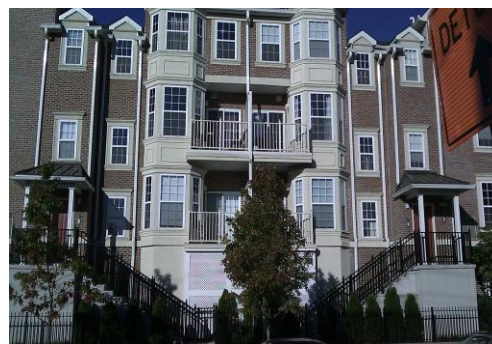
# Hudson County Economic Development Corporation Giving Business a Helping Hand

---

Passaic Avenue (Callahan Concrete Site), Harrison, New Jersey this site was one of the original sites on the first grant. It is now redeveloped into a 160 room Hampton Inn and Suites Hotel providing (60) needed jobs for the community. The property had been unused and blighted for over 20 years. Hampton Inn and Suites was the first hotel in Harrison, NJ since the stagecoach days and helped to stimulate development on the Harrison waterfront. The hotel opened in April 2004.



The Harrison Waterfront Redevelopment project is one of the great redevelopment opportunities in Hudson County. The project will transform the Town of Harrison into a regional destination attracting people from all over the tri-state area. In 2005, the New Jersey Department of Environmental Protection (NJDEP) awarded the designation to the Town of Harrison as a **Brownfield Development Area (BDA)**. The BDA provides an additional 2 million dollars of Hazardous Discharge Site Remediation Funds (HDSRF) to municipalities for assessment and remediation activities, it expedites the permitting process and gives a single point of contact with the NJDEP. The BDA has been instrumental in the redevelopment of two hundred and fifty acres of prime waterfront real estate. The site is being developed into a vibrant mixed use, transit and pedestrian orientated location. The plan includes: residential housing, commercial and retail business, and various entertainment venues. The project is highlighted by the opening of the Red Bull Arena the new home of the professional soccer team the Red Bulls.



# Hudson County Economic Development Corporation Giving Business a Helping Hand

---



The Hudson County Economic Development Corporation has been in the forefront of financial assistance to the business community of Hudson County since 1994. HCEDC has over 4 million dollars working for businesses in Hudson County and has helped to produce over 600 jobs in the small business market. We have an array of products to serve our clients.

## **Micro Loan Program**

HCEDC's Microloan Program provides direct funding to small businesses located in Hudson County with five or fewer employees. Often these small businesses do not have access to the financial resources necessary to bring them to the next level.

Loan amounts range from \$5,000 to \$25,000, interest rates will be indexed to the prime rate at closing. Loan terms will be determined depending on purpose of loan.

## **Business Loan Program**

Our Business Loan Program is designed to help Hudson County businesses that are established and promising, yet are unable to obtain conventional financing. Eligible uses include working capital, the purchase of new machinery or equipment, and the purchase or renovation of a business property in Hudson County. Loan amounts range from \$25,000 to \$100,000. The interest rate is blended to the prime rate for the term of the loan. Terms are flexible. Our loan application is provided on our website and can be downloaded for your convenience.

## **Brownfield Revolving Loan Fund**

Hudson County Economic Development Corporation currently manages three USEPA Brownfield Grants including the Brownfield Revolving Loan Fund Program (BRLF). The BRLF program provides low interest loans to eligible borrowers with reasonable terms for site remediation. BRLF funding provides towns and cities with a valuable tool to take the most difficult Brownfield sites to the next level of redevelopment. The program serves all twelve municipalities of Hudson County.

### BRLF Loan Structure

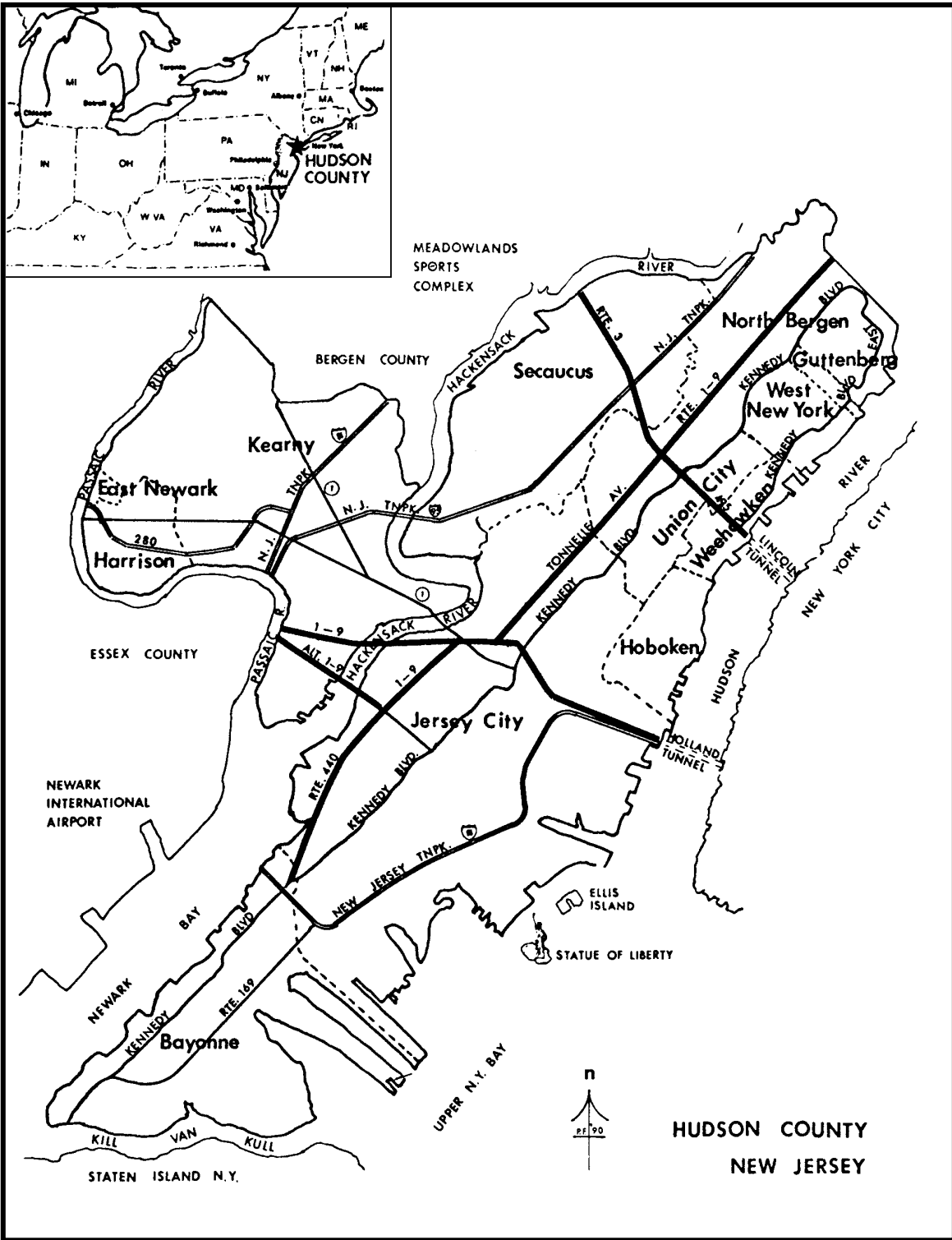
Below market interest rates.

Repayment terms are flexible.

**Maximum loan amount \$300,000**

Our website is [www.hudsonedc.org](http://www.hudsonedc.org)

# COUNTY MAP



# COUNTY GOVERNMENT

---

Hudson County operates under a County Government as authorized by the State Optional Charter Law for Counties. The Hudson County Board of chosen Freeholders is comprised of nine members elected to four-year terms. The Board elects a chairperson.

Thomas DeGise  
**COUNTY EXECUTIVE**

**Justice Brennan Court House**  
583 Newark Avenue  
Jersey City, NJ 07306  
201-795-6200

## **BOARD OF CHOSEN FREEHOLDERS**

Administration Building Annex  
567 Pavonia Avenue  
Jersey City, NJ 07306  
201-795-6101

1 <sup>st</sup> District	Doreen DiDomenico
2 <sup>nd</sup> District	William O'Dea
3 <sup>rd</sup> District	Jeffrey Dublin
4 <sup>th</sup> District	Eliu Rivera
5 <sup>th</sup> District	Anthony L. Romano
6 <sup>th</sup> District	Tilo Rivas
7 <sup>th</sup> District	Jose Munoz
8 <sup>th</sup> District	Thomas Liggio
9 <sup>th</sup> District	Albert Cifelli

# COUNTY GOVERNMENT

---

## Hudson County Administration Building

595 Newark Avenue

Jersey City, New Jersey 07306

201-795-6200

### County Budget

\$472 million for the year 2011

Source: Hudson County Executive's Budget

### County Bond Rating

**Aa3** by Fitch Investment Services & A3 Moody Bond Records

**AA** by Standard & Poors

Source: Hudson County Financial office

### Registered Voters

As of January 2011 the breakdown of registered voters in the county was:

Democrat	165,047
Republican	25,537
Unaffiliated	127,400
Green Party	74
Liberal Party	125
Natural Law	1
Reformed	3
Conservative	18
Constitution	14
Total	318,219

# MUNICIPAL POPULATIONS

For information on confidentiality protection, no sampling error, and definitions, see <http://www.census.gov/prod/www/abs/decenial.html>

Subject	Number	Percent	Subject	Number	Percent
<b>Total population.....</b>	<b>634,266</b>	<b>100.0</b>	<b>HISPANIC OR LATINO AND RACE</b>		
<b>SEX AND AGE</b>			<b>Total population.....</b>	<b>634,266</b>	<b>100.0</b>
Male.....	313,787	49.5	Hispanic or Latino (of any race).....	267,853	42.2
Female.....	320,479	50.5	Mexican.....	19,999	3.2
Under 5 years.....	42,586	6.7	Puerto Rican.....	56,436	8.9
5 to 9 years.....	32,606	5.3	Cuban.....	28,652	4.5
10 to 14 years.....	32,978	5.2	Other Hispanic or Latino.....	162,766	25.7
15 to 19 years.....	37,526	5.9	Not Hispanic or Latino.....	366,413	57.8
20 to 24 years.....	48,115	7.6	White alone.....	147,282	23.2
25 to 34 years.....	131,508	20.7	<b>RELATIONSHIP</b>		
35 to 44 years.....	96,716	15.2	<b>Total population.....</b>	<b>634,266</b>	<b>100.0</b>
45 to 54 years.....	82,985	13.1	In households.....	624,888	98.5
55 to 59 years.....	34,080	5.4	Householder.....	246,437	38.9
60 to 64 years.....	28,100	4.4	Spouse.....	93,124	14.7
65 to 74 years.....	36,094	5.7	Child.....	173,799	27.4
75 to 84 years.....	21,487	3.4	Own child under 18 years.....	113,931	18.0
85 years and over.....	8,485	1.3	Other relatives.....	59,091	9.3
Median age (years).....	34.2	(X)	Under 18 years.....	15,188	2.4
18 years and over.....	503,104	79.3	Nonrelatives.....	52,437	8.3
Male.....	246,338	38.8	Unmarried partner.....	19,389	3.1
Female.....	256,766	40.5	In group quarters.....	9,378	1.5
21 years and over.....	479,307	75.6	Institutionalized population.....	5,036	0.8
62 years and over.....	82,170	12.9	Noninstitutionalized population.....	4,342	0.7
65 years and over.....	105,477	10.4	<b>HOUSEHOLDS BY TYPE</b>		
Male.....	26,655	4.2	<b>Total households.....</b>	<b>246,437</b>	<b>100.0</b>
Female.....	39,411	6.2	Family households (families).....	148,473	60.2
<b>RACE</b>			With own children under 18 years.....	68,114	27.6
One race.....	606,439	95.6	Married-couple family.....	93,124	37.8
White.....	342,792	54.0	With own children under 18 years.....	41,755	16.9
Black or African American.....	83,925	13.2	Female householder, no husband present.....	40,358	16.4
American Indian and Alaska Native.....	4,081	0.6	With own children under 18 years.....	20,713	8.4
Asian.....	84,924	13.4	Nonfamily households.....	97,964	39.8
Asian Indian.....	37,236	5.9	Householder living alone.....	73,741	29.9
Chinese.....	11,239	1.8	Householder 65 years and over.....	20,367	8.3
Filipino.....	20,638	3.3	Households with individuals under 18 years.....	76,556	31.1
Japanese.....	1,373	0.2	Households with individuals 65 years and over.....	51,012	20.7
Korean.....	4,791	0.8	Average household size.....	2.54	(X)
Vietnamese.....	1,973	0.3	Average family size.....	3.2	(X)
Other Asian <sup>1</sup> .....	7,674	1.2	<b>HOUSING OCCUPANCY</b>		
Native Hawaiian and Other Pacific Islander.....	344	0.1	<b>Total housing units.....</b>	<b>270,335</b>	<b>100.0</b>
Native Hawaiian.....	81	0.0	Occupied housing units.....	246,437	91.2
Guamanian or Chamorro.....	83	0.0	Vacant housing units.....	23,898	8.8
Samoan.....	27	0.0	For seasonal, recreational, or occasional use.....	1,343	0.5
Other Pacific Islander <sup>2</sup> .....	153	0.0	Homeowner vacancy rate (percent).....	4.5	(X)
Some other race.....	90,373	14.2	Rental vacancy rate (percent).....	6.6	(X)
Two or more races.....	27,827	4.4	<b>HOUSING TENURE</b>		
<b>Race alone or in combination with one or more other races: <sup>3</sup></b>			<b>Occupied housing units.....</b>	<b>246,437</b>	<b>100.0</b>
White.....	362,592	57.2	Owner-occupied housing units.....	79,063	32.1
Black or African American.....	93,248	14.7	Renter-occupied housing units.....	167,374	67.9
American Indian and Alaska Native.....	7,828	1.2	Average household size of owner-occupied units.....	2.66	(X)
Asian.....	91,810	14.5	Average household size of renter-occupied units.....	2.48	(X)
Native Hawaiian and Other Pacific Islander.....	1,614	0.3			
Some other race.....	106,846	16.8			

- Represents zero or rounds to zero. (X) Not applicable.

1 Other Asian alone, or two or more Asian categories.

2 Other Pacific Islander alone, or two or more Native Hawaiian and Other Pacific Islander categories

3 In combination with one or more of the other races listed. The following six numbers may add to more than the total population and the six percentages may add to more than 100 percent because individuals may report more than one race.

## COUNTY POPULATIONS

	TOTAL	WHITE	BLACK	HISPAN IC ANY RACE	AMER. INDIAN	ASIAN/PAC. ISLANDER	OTHER	BIRACIAL MULTIRACIAL
<b>Bayonne</b>	63,024	43,618	5,584	16,251	194	4,861	6,303	2,448
<b>East Newark</b>	2,406	1,516	46	1,477	10	188	551	94
<b>Guttenberg</b>	11,176	7,537	537	7,245	102	818	1,593	585
<b>Harrison</b>	13,620	7,941	297	6,017	76	2,217	2,517	570
<b>Hoboken</b>	50,005	41,124	1,767	7,602	73	3,558	2,144	1,324
<b>Jersey City</b>	247,597	80,885	64,002	68,256	1,272	58,595	31,726	10,956
<b>Kearny</b>	40,684	29,933	2,186	16,253	163	1,793	5,099	1,478
<b>North Bergen</b>	60,773	40,705	2,456	41,569	535	3,979	10,107	2,942
<b>Secaucus</b>	16,264	11,125	668	3,025	32	3,318	713	402
<b>Union City</b>	66,455	38,549	3,487	56,291	519	1,587	18,231	3,749
<b>Weehawken</b>	12,554	9,020	606	5,055	61	1,024	1,351	491
<b>West New York</b>	49,708	30,839	2,289	38,812	744	2,986	10,038	2,788
	634,266	342,792	83,925		4,081	84,924	90,717	27,827

Source: US Census

## COUNTY UNEMPLOYMENT RATES

### Unemployment Figures January-Aug. 2011

	Jan	Feb	March	April	May	June	July	Aug
LABOR FORCE	295,100	297,600	298,600	297,900	299,100	300,500	303,100	300,300
EMPLOYMENT	263,600	265,400	267,100	267,400	267,000	266,800	270,200	269,900
UNEMPLOYMENT	31,500	32,200	31,500	30,500	32,100	33,600	32,900	30,400
UNEMPLOYMENT RATES %	10.7	10.8	10.5	10.2	10.7	11.2	10.8	10.1

Source: NJ Dept. of Labor

### 2011 Unemployment Figures

	Labor Force	Employment	Unemployment	Employment Rate
<b>County Totals</b>	<b>297,664</b>	<b>265,585</b>	<b>32,079</b>	<b>10.8</b>
Bayonne city, NJ	29,173	25,813	3,360	11.5
East Newark borough, NJ	1,133	1,025	109	9.6
Guttenberg town, NJ	5,654	5,094	560	9.9
Harrison town, NJ	7,423	6,567	856	11.5
Hoboken city, NJ	28,695	27,074	1,621	5.6
Jersey City city, NJ	116,602	103,700	12,902	11.1
Kearny town, NJ	18,129	15,880	2,249	12.4
North Bergen township, NJ	26,810	23,721	3,089	11.5
Secaucus town, NJ	7,639	7,250	389	5.1
Union City city, NJ	27,485	23,710	3,775	13.7
Weehawken township, NJ	7,921	7,221	700	8.8
West New York town, NJ	20,984	18,530	2,454	11.7

Please call us for updated monthly unemployment figures at (201) 369-4370

# EDUCATION AND CHILD CARE

---

## Child Care Facilities

As of September 2011, there were approximately 245-day care and pre-school facilities. This does not include public school pre-school programs.

Source: [www.ULOHC.org](http://www.ULOHC.org)

## Education

- 78 Public Elementary Schools
- 7 Middle Schools
- 27 High Schools
- 16 Elementary Parochial Schools
- 22 Secondary Parochial Schools
- 14 Charter Schools
- 1 Regional Day School (7<sup>th</sup> and 8<sup>th</sup> Grade Special Needs)
- 3 Adult Education High Schools

Source: Hudson County Superintendent of Schools, August 2011

## Institutes of Higher Education

### **Hudson County Community College:**

#### **Jersey City and West New York.**

Associate degree programs.

- **New Jersey City University: Jersey City.**  
Undergraduate and Graduate degree programs.
- **Stevens Institute of Technology: Hoboken**  
Undergraduate and Graduate degree programs.
- **Saint Peter's College: Jersey City.**  
Undergraduate and Graduate degree programs.

## Institutes of Higher Education within 15 Miles

- Rutgers, The State University; Newark
- Rutgers University - School of Law; Newark
- Essex County College; Newark
- New Jersey Institute of Technology; Newark
- New Jersey College of Medicine and Dentistry; Newark
- Seton Hall Law School; Newark

## HOSPITALS

---

There are nine hospitals in Hudson County:

<b>Christ Hospital</b>	201-795-8200	176 Palisade Avenue Jersey City, NJ 07306
<b>Bayonne Hospital</b>	201-858-5000	29 East 29 <sup>th</sup> Street Bayonne, NJ 07002
<b>Jersey City Medical Center</b>	201-915-2000	355 Grand Street Jersey City, NJ 07302
<b>Meadowlands Medical Center</b>	201-392-3100	55 Meadowland Pkwy Secaucus, NJ 07094
<b>Meadowview Hospital</b>	201-319-3660	595 County Ave Secaucus, NJ 07094
<b>Palisades Medical Center</b>	201-854-5000	7600 River Road North Bergen, NJ 07047
<b>Hoboken University Medical Center</b>	201-418-1000	308 Willow Avenue Hoboken, NJ 07030
<b>Clara Mass Medical Center West Hudson Division</b>	201-955-7000	206 Bergen Avenue Kearny, NJ 07032

# LIBERTY SCIENCE CENTER

---



Liberty State Park  
251 Philip Street  
Jersey City, NJ 07305  
200-1000; TDD (201) 200-1993  
**Source:** [www.LSC.org](http://www.LSC.org)

Liberty Science Center is a New Jersey nonprofit corporation dedicated to offering exceptional science learning experiences onsite, offsite and online. Located in Liberty State Park, Jersey City, NJ, we engage learners of all ages in science excitement, provide professional development for teachers, and actively connect people of all backgrounds to pivotal science and society issues.

## History & Mission

Liberty Science Center engages diverse audiences in relevant issues that connect nature, humanity and technology. Through innovative and meaningful experiences, we inspire action to strengthen communities and advance global stewardship.

## Our History

Located in historic Liberty State Park, neighboring the Statue of Liberty and across the river from Lower Manhattan, Liberty Science Center first opened its doors in 1993. But it truly began in the 1970s, when a series of editorials in the *Star-Ledger* newspaper pushed state leaders to recognize that more educational resources were needed to build a science- and technology-savvy population.

A group of local corporations initiated a successful public/private partnership in the 1980s, raising \$68 million to create Liberty Science Center. Since that time, the Center has become one of New Jersey's most popular attractions, an important tool for building a well-educated workforce, and a daring pioneer in the global science museum field.

LSC is accessible to all physically challenged guests. Please inform LSC of your special needs.

# HUDSON COUNTY MEDIA

---

## **News Media**

Hudson County is well served by daily and weekly newspapers, radio stations and cable television companies.

## **Daily Newspapers**

<u>Newspaper</u>	<u>Circulation</u> (as of 01/2011)
<b>The Jersey Journal</b> Includes: Bayonne, Jersey City & North Hudson & West Hudson	<u>Daily (Mon-Sat)</u> 25,782

## **Weekly and Foreign Language Newspapers**

- Avance Weekly (Union City)
- Bayonne Community News
- El Especialito (Union City)
- El Extra (Union City)
- El Ideal (Union City)
- Filipino Express (Jersey City)
- Hudson Current (serving)  
*Hoboken, Jersey City, North Bergen, Secaucus,  
Union City, Weehawken, West New York*
- Hudson Reporter (serving)  
*Hoboken, Jersey City, North Bergen, Secaucus,  
Union City, Weehawken, West New York*
- The Kearny Observer
- La Tribuna Hispana (North Bergen)
- The Riverview Observer
- Secaucus Home News
- The Urban Times
- Hoboken Reporter

# HUDSON COUNTY MEDIA ELECTRONIC

---

## **Cable Television Providers**

### **Cablevision**

360 1<sup>st</sup> Street  
Hoboken, NJ 07030  
(201) 798-6060

Serving: North Bergen, Weehawken, West New York, Union City & Hoboken

### **Comcast Cable of Jersey City**

2121 Kennedy Boulevard  
Jersey City, NJ 07305  
(201) 432-1234

### **Cablevision of Bayonne**

685 Broadway  
Bayonne, NJ 07002  
(201) 436-7095

### **Time Warner Cable**

200 Roosevelt Place  
Palisades Park, NJ 07650  
(201) 886-0900  
Serving: Guttenberg

### **Cablevision**

48<sup>th</sup> St. & Broadway.  
Union City, NJ 07087  
(201) 766-2188

### **Comcast Cablevision**

800 Rahway Avenue  
Union, NJ 07083  
(201) 997-6600  
Serving: Kearny, East Newark, Secaucus & Harrison

## **Radio:**

### **WFMU**

43 Montgomery Street  
Jersey City NJ 07302  
(201) 521-1416

### **WHTZ Radio Z-100 FM**

101 Hudson Street  
Jersey City, NJ 07302  
(201)209-6200

---

# TRANSPORTATION

---

## **Major Arteries:**

- New Jersey Turnpike (8 exits)
- Route 3
- Route 440
- Holland Tunnel
- US Routes 1&9
- Route 169
- Lincoln Tunnel
- Bayonne Bridge

## **Rail:**

### **NJ Transit:**

#### ***WWW.NJTRANSIT.COM***

NJ Transit has an extensive rail system providing passenger service throughout New Jersey and into New York Penn Station. The Hoboken Terminal is NJ Transit's only station on the New Jersey Waterfront and provides convenient and frequent direct or connecting routes to all destinations served by the New Jersey Transit rail system.

NJ Transit currently runs seven separate direct routes to and from Hoboken Terminal:

- |               |                         |                   |
|---------------|-------------------------|-------------------|
| * Bergen Line | * Boonton Line          | * Gladstone Line  |
| * Main Line   | * Montclair Branch Line | * Morristown Line |
|               | * Pascack Valley Line   |                   |

### **Port Authority Trans-Hudson (PATH) System:**

#### ***WWW.PANYNJ.INFO***

The Port Authority Trans-Hudson System is a rapid rail system that operates between Newark, Harrison, Jersey City and Hoboken in New Jersey and the World Trade Center and 33<sup>rd</sup> Street stations across the Hudson River in New York. The PATH extends 13.9 miles and has 13 rail stations throughout northeastern New Jersey and Manhattan. This system now serves approximately 207,000 passengers a day. Fare is \$1.50 each way.

# TRANSPORTATION

---

## **Hudson Transportation Management Association:**

**[WWW.HUDSONTMA.ORG](http://WWW.HUDSONTMA.ORG)**

The Hudson Transportation Management Association (TMA) is a commuting assistance agent for employers and employees throughout the county. The Hudson TMA is dedicated to fulfilling the county's transportation needs through local, county and state-wide transportation planning and programming. As a division of the Hudson County Improvement Authority, the TMA works with issues vital to the county. Including transportation demand, transportation management, grant preparation and participation in state transit programs.

Your partnership with us keeps you informed and helps us better serve your transportation needs. All of our programs aim to reduce traffic congestion and lower exhaust emissions, which is a benefit not only for your commute, but for our shared environment. Our efforts improve economic growth, and more importantly, our quality of life.

## **Hudson-Bergen Light Rail Transit System:**

**[WWW.NJTRANSIT.COM](http://WWW.NJTRANSIT.COM)**

As it stands today, the Hudson-Bergen Light Rail is a 13-mile north south light rail alignment which provides Hudson County residents, employees, and tourists with excellent transit connections, the extent of which are unparalleled in any other part of the State. The alignment offers direct connections to Rail, Bus, Ferry and Path .The Hudson-Bergen Light Rail opened in five key segments, the first of which opened in April 2000. Currently, there are 22 stations located in four municipalities. The new station is targeted for 8<sup>th</sup> Street in Bayonne Available Planned Park-and-Ride lots are at the following stations 22<sup>nd</sup> Street, 34<sup>th</sup> Street 45<sup>th</sup> Street in Bayonne, Westside Ave. and Liberty State Park in Jersey City; Tonnelle Avenue in North Bergen.

## **Ferry:**

### **NY Waterway:**

**[WWW.NYWATERWAY.COM](http://WWW.NYWATERWAY.COM)**

NY Waterway is a privately owned and operated ferry service that offers frequent and convenient service into and out of Manhattan from Weehawken, Hoboken and Jersey City. NY Waterway's ferry terminals in Hoboken and Jersey City are conveniently adjacent to NJ Transit and PATH stations.

# TRANSPORTATION

---

## **Bus Line Information**

Hudson County is largely served by **NJ Transit** Bus Lines. Call the NJ TRANSIT North Jersey Information Center at 1(800) 772-2287 (out of state-1 973-275-5555) to receive the appropriate schedules for times and frequency of service.

### **Other Carriers**

Listed next to the carrier is the municipality served. Please call this company for specific schedule information.

<b>BUS COMPANY</b>	<b>AREA SERVED</b>	<b>PHONE #</b>
<b>ACADEMY BUS LINES</b>	Guttenberg, Union City Hoboken, West New York North Bergen, Secaucus	(201) 420-7000
<b>A&amp;C BUS LINE</b>	Jersey City	(201) 434-5599
<b>BROADWAY BUS</b>	Bayonne	(201) 339-4848
<b>CAREFREE BUS LINES</b>	Bloomfield-Belleville-Jersey City	(800) 640-9429

### **INTERSTATE SERVICE TO NEW YORK CITY**

The following interstate services to New York City also operate from Hudson County. These routes are not shown on the map. Please check with the carrier for additional information

<b>BUS COMPANY</b>	<b>AREA SERVED</b>	<b>PHONE #</b>
<b>NJ Transit Bus.</b>	Jersey City, Hoboken	(800) 772-2287
<b>Coach USA (Red &amp; Tan)</b>	Bayonne, Jersey City,	(201) 459-9800

# TRANSPORTATION

---

## **Newark Liberty International Airport**

Newark Liberty International Airport is less than an hour drive from all municipalities in Hudson County. The airport is one of the most modern and fastest growing airports in the world.

The airport opened in 1928 and covers over 2000 acres. **The Port Authority of New York and New Jersey** has operated the airport since 1948.

In the 1950's the Port Authority added an instruments runway, a terminal building, a control tower and an air cargo center. The Newark Liberty International Airport has experienced rapid growth in international air service in the last decade. Today international airlines offer direct service to many destinations around the world. The City of Newark spent about \$8.2 million on construction and development of the airport. EWR is nearing completion of a \$3.8 billion redevelopment program that includes: the extension of the AirTrain system, a second International Arrivals Facility, modernized passenger terminals, improved airport access, additional parking facilities, expanding roadways, and improved runways and taxiways.

Continental Airlines is the largest carrier and is accountable for 65 % of the annual airport volume.

### **RECENT IMPROVEMENTS:**

#### ❖ **Monorail**

An inter-airport system offering access to parking facilities and car rental agencies

#### ❖ **International Terminal**

The International Arrival Facility (IFA) opened in January 1996. The terminal has doubled the capacity of arriving passengers of the previous terminal.

#### ❖ **International Air Cargo Complex**

The northern area of the airport is being developed. It opened in 1998 with SAS Cargo as the anchor tenant.

Newark Liberty International Airport has experienced rapid growth in international air service in the last decade. Today international airlines offer direct service to many destinations around the world.

The main departure runway has grown from 2,800 to 11, 0000 ft.

#### ❖ **Employment & Economic Impact**

Over 24,000 people are employed at the airport. EWR contributes \$18.5 billion in economic activity to the NY/NJ metropolitan region, including \$6.7 billion in wages for some 157,000 jobs derived from airport activity.

# COUNTY EMPLOYMENT PROJECTIONS

## HUDSON COUNTY INDUSTRY EMPLOYMENT PROJECTIONS: 2004-2014 BY MAJOR INDUSTRY SECTOR \*

Employment \* Change  
2004-2014  
Percent

Naics Title	Employment 2004	Employment 2014	Employment Change	Annual Average Percent Change	Total Percent Change
<b>Total Employment, All Jobs</b>	<b>246,050</b>	<b>268,400</b>	<b>22,350</b>	<b>0.9</b>	<b>9.1</b>
<b>Goods-Producing</b>	<b>19,450</b>	<b>15,550</b>	<b>-3,850</b>	<b>-2.2</b>	<b>-19.9</b>
Construction	5,850	6,150	300	0.5	5.3
Manufacturing	13,550	9,400	-4,150	-3.6	-30.7
<b>Services-Providing</b>	<b>226,600</b>	<b>252,800</b>	<b>26,200</b>	<b>1.1</b>	<b>11.6</b>
Wholesale Trade	16,500	17,500	1,000	0.6	5.9
Retail Trade	22,550	24,000	1,450	0.6	6.4
Transportation and Warehousing	24,250	25,400	1,150	0.5	4.7
Utilities	850	800	-50	-0.8	-7.3
Information	8,400	7,750	-600	-0.8	-7.4
Finance and Insurance	31,450	35,350	3,900	1.2	12.3
Real Estate and Rental and Leasing	4,400	4,850	450	1.0	10.1
Professional, Scientific, and Technical Services	11,450	15,500	4,050	3.1	35.4
Management of Companies and Enterprises	2,950	3,250	300	1.0	10.0
Administrative Sup. & Waste Mgmt and Remediate	15,350	18,250	2,900	1.7	18.9
Educational Services	4,350	4,850	500	1.1	11.6
Health Care and Social Assistance	23,250	29,400	6,150	2.4	26.3
Arts, Entertainment, and Recreation	1,050	1,350	300	2.4	26.5
Accommodation and Food Services	11,250	13,350	2,100	1.7	18.6
Other Services (Except Government)	7,300	8,700	1,350	1.7	18.7
Government	41,200	42,550	1,350	0.3	3.3
Federal Government	7,000	6,750	-250	-0.4	-3.6
State Government	3,800	3,950	150	0.4	4.1
Local Government	30,400	31,850	1,450	0.5	4.8

# HUDSON COUNTY REAL ESTATE

---

<b>MUNICIPALITY 2011</b>	<b>*TAX RATE / per \$1000</b>
BAYONNE	68.49
EAST NEWARK	83.62
GUTTENBERG	32.79
HARRISON	61.43
HOBOKEN	46.21
JERSEY CITY	70.08
KEARNY	94.67
NORTH BERGEN	48.43
SECAUCUS	36.45
UNION CITY	61.89
WEEHAWKEN	41.32
WEST NEW YORK	64.98

Source: Hudson County Board of Taxation

## **Hudson County Household Income (2010)**

Mean Household Earnings	\$79,154
Families:	\$84,663
Non-Family Household:	\$66,677
Per Capita Household:	\$31,408

Source: [www.census.gov](http://www.census.gov)

# BAYONNE

---

<b>Address:</b>	City of Bayonne 630 Avenue C Bayonne, NJ 07002 <b>Website:</b> <a href="http://www.bayonnenj.org">www.bayonnenj.org</a>
<b>Population:</b>	61,842
<b>Area:</b>	5.4 square miles
<b>City Hall Phone #:</b>	201-858-6000
<b>City Hall FAX #:</b>	201-858-6092
<b>Police Phone #:</b>	201-858-6900
<b>Fire Phone #:</b>	201-858-6005
<b>Form Of Government:</b>	Mayor-Council
<b>Mayor:</b>	Mark Smith
<b>Council Members:</b>	Agnes Gillespie Joseph Hurley Raymond Graves Terrence P. Ruane Debra Czerwienski
<b>Urban Enterprise Zone:</b>	Terrence Malloy City of Bayonne 630 Avenue C. Bayonne, NJ 07002 (201) 858-6043

The City of **Bayonne**, which compromises a land area of 5.4 square miles, is a peninsula surrounded by Newark Bay to the west, the Kill Van Kull Channel to the south and the Upper New York Bay on the east. The famous Morris Canal, now almost completely filled in, marks the boundary line between Bayonne and its land neighbor to the north, Jersey City. The City of Bayonne was known as Bayonne Township from the time it was separated from Bergen Township in 1861 until its incorporation as a city in 1869. Downtown Bayonne is still referred to as Bergen Point.

# EAST NEWARK

---

<b>Address:</b>	Borough of East Newark 34 Sherman Avenue East Newark, NJ 07029 <b>Website</b> <a href="http://www.boroughofeastnewark.com">www.boroughofeastnewark.com</a>
<b>Population:</b>	2,377
<b>Area:</b>	0.1 square miles
<b>City Hall Phone #:</b>	973-481-2902
<b>City Hall FAX #:</b>	973-481-0627
<b>Police Phone #:</b>	973-481-2900
<b>Fire Phone #:</b>	973-481-2901
<b>Form Of Government:</b>	Mayor-Council
<b>Mayor:</b>	Joseph R. Smith
<b>Council Members:</b>	José Silva President Edward Serafin Hans Peter Lucas Yamara Salas Charles Tighe Jeanne Zincavage,

The Borough of **East Newark** was formed from a portion of Kearny Township by referendum on July 2, 1895. Comprising a land area of 0.1 miles, East Newark is the smallest municipality in Hudson County. Located on the Passaic River, the borough is situated between the towns of Kearny and Harrison.

# GUTTENBERG

---

<b>Address:</b>	Town of Guttenberg 6808 Park Avenue Guttenberg, NJ 07093 <b>Website:</b> <a href="http://www.guttenbergnj.org">www.guttenbergnj.org</a>
<b>Population:</b>	10,807
<b>Area:</b>	0.2 square miles
<b>City Hall Phone #:</b>	201-868-2315
<b>City Hall FAX #:</b>	201-868-9332
<b>Police Phone #:</b>	201-868-3300
<b>Fire Phone #:</b>	201-868-3300
<b>Form Of Government:</b>	Mayor-Council
<b>Mayor:</b>	Gerald Drasheff
<b>Council Members:</b>	John Habermann Donna Florio Alfonso Caso Monica Fundora Efrain Velez
<b>Urban Enterprise Zone:</b>	Maria Bello Town of Guttenberg 6808 Park Avenue Guttenberg, NJ 07093 201-868-2315

The **Town of Guttenberg** was incorporated March 9, 1859. The town is situated on a narrow strip of land, 0.2 square miles in area, originally owned by the 17<sup>th</sup> century Dutch Settlers Tielman Van Vleck and Dirck Claesen. Guttenberg is bounded on the north and west by the township of North Bergen, on the south by the town of West New York and on the east by the Hudson River. The Galaxy Apartments, three high-rise structures on the Hudson waterfront, is home to approximately 20 percent of the town's total population. Guttenberg is the most densely populated town in the state.

# HARRISON

---

<b>Address:</b>	Town of Harrison 318 Harrison Avenue Harrison, NJ 07029 <b>Website:</b> <a href="http://www.townofharrison.com">www.townofharrison.com</a>
<b>Population:</b>	14,424
<b>Area:</b>	1 square mile
<b>City Hall Phone #:</b>	973-268-2444
<b>City Hall FAX #:</b>	973-482-2101
<b>Police Phone #:</b>	973-483-4100
<b>Fire Phone #:</b>	973-483-0611
<b>Form Of Government:</b>	Mayor-Council
<b>Mayor:</b>	Raymond J. McDonough
<b>Council Members:</b>	Jesus R. Huaranga Michael T. Dolaghan James P. Doran Lawernce Bennett Caroline Mandaglio Anselmo Millan Francisco Nasciemento Victor Villalta

Located in the western part of Hudson County, adjacent to the city of Newark, the **Town of Harrison** is 1.2 square miles in area and is bordered by East Newark, the Passaic River and the Town of Kearny. Harrison is an industrial based community and is easily accessible by Interstate Highway Route 280. Harrison Township was formed from Lodi Township in 1849 and renamed Harrison Town in 1869.

# HOBOKEN

---

<b>Address:</b>	City of Hoboken 94 Washington Street Hoboken, NJ 07030 <b>Website:</b> <a href="http://www.hobokennj.org">www.hobokennj.org</a>	
<b>Population:</b>	38,577	
<b>Area:</b>	1.3 square miles	
<b>City Hall Phone #:</b>	201-420-2013	
<b>City Hall FAX #:</b>	201-420-2009	
<b>Police Phone #:</b>	201-420-2100	
<b>Fire Phone #:</b>	201-420-2007	
<b>Form Of Government:</b>	Mayor-Council	
<b>Mayor:</b>	Dawn Zimmer	
<b>Council Members:</b>	Theresa Castellano	
	Elizabeth Mason	Carol Marsh
	Michael Russo	David Mello
	Tim Occhipinti	Ravinder S. Bhalla
	Peter Cunningham	
	Jennifer Giattino	

Formed from North Bergen Township in 1849, the **City of Hoboken** is 1.3 square miles in area and is located on the Hudson River, directly across from New York City. The city is bordered on the north by Weehawken and Union City and on the west and south by Jersey City. Hoboken's landmarks include the Stevens Institute of Technology at Castle Point, founded in 1870, and the Erie Lackawanna Commuter Rail Terminal. Hoboken is also famous for the first steamboat, the first locomotive, the first baseball game (in Elysian Park) and the first brewery in America and is the home of Frank Sinatra.

# JERSEY CITY

---

<b>Address:</b>	City of Jersey City 280 Grove Street Jersey City, NJ 07302 <b>Website:</b> <a href="http://www.cityofjerseycity.com">www.cityofjerseycity.com</a>
<b>Population:</b>	240,055
<b>Area:</b>	14.7 square miles
<b>City Hall Phone #:</b>	201-547-5200
<b>City Hall FAX #:</b>	201-547-4323
<b>Police Phone #:</b>	201-547-5477
<b>Fire Phone #:</b>	201-547-4240
<b>Form Of Government:</b>	Mayor-Council
<b>Mayor:</b>	Jerramiah Healy
<b>Council Members:</b>	Michael Sottolano David Donnelly Nida Lopez Peter Brennan Michele Massey William Gaughan Steven Fulop Viola Richardson Rolando Lavarro
<b>Urban Enterprise Zone:</b>	Roberta Farber Jersey City Economic Development Corp. 30 Montgomery St., Suite 820 Jersey City, NJ 07302 201-333-7797

**Jersey City** is the second most populous city in the state of New Jersey after Newark. The 14.7 square mile city is bounded on the north by Secaucus, North Bergen, Union City and Hoboken, on the west by the Hackensack River, on the south by Bayonne and on the east by the Hudson River. The area now known as Paulus Hook was one of the first areas settled by the Dutch in the mid 1600's. Jersey City, as we know it today, was formed by the consolidation of Bergen City and Hudson City with Jersey City in 1870 and later joined by the town of Greenville in 1873. Jersey City is home to the Statue of Liberty, Ellis Island, the Liberty Science Center and Liberty State Park.

---

# KEARNY

---

<b>Address:</b>	Town of Kearny 402 Kearny Avenue Kearny, NJ 07032 <b>Website:</b> <a href="http://www.kearnynj.org">www.kearnynj.org</a>
<b>Population:</b>	40,513
<b>Area:</b>	9.3 square miles
<b>City Hall Phone #:</b>	201-955-7400
<b>City Hall FAX #:</b>	201-991-0608
<b>Police Phone #:</b>	201-998-1313
<b>Fire Phone #:</b>	201-991-1400
<b>Form Of Government:</b>	Mayor/Council
<b>Mayor:</b>	Alberto Santos
<b>Council Members:</b>	Alexa Arce Albino Cardoso Carole Jean-Doyle Eileen Eckel Laura Pettigrew Madeline Peyko Susan McCurrie Michael Landy
<b>Urban Enterprise Zone:</b>	John Peneda Town Hall Annex 410 Kearny Avenue Kearny, NJ 07032 201-955-7985

**The Town of Kearny**, 9.3 miles in area is located in the western region of Hudson County and is bounded by Bergen County to the north, the Hackensack River to the east, East Newark and Harrison to the south and the Passaic River to the south and west. The area was originally settled in 1668 when it was part of New Barbados Neck. The present municipal boundaries were formed when the town separated from the northern part of Harrison Township in 1867. The town was named after Major General Philip Kearny, killed in action in 1862 at Chantilly, Virginia.

# NORTH BERGEN

---

<b>Address:</b>	Township of North Bergen 4233 Kennedy Boulevard North Bergen, NJ 07047 Website: <a href="http://www.northbergen.org">www.northbergen.org</a>
<b>Population:</b>	58,092
<b>Area:</b>	5.4 square miles
<b>City Hall Phone #:</b>	201-392-2000
<b>City Hall FAX #:</b>	201-392-8551
<b>Police Phone #:</b>	201-392-2100
<b>Fire Phone #:</b>	201-864-8000
<b>Form Of Government:</b>	Commission
<b>Mayor:</b>	Nicholas J. Sacco
<b>Commissioners:</b>	Hugo Cabrera, Revenue & Finance Theresa Ferraro, Public Safety Frank Gargiulo, Public Works Allen Pascual, Parks and Recreation
<b>Urban Enterprise Zone:</b>	Kim Nicolliello Township of North Bergen 7616 Broadway North Bergen, NJ 07047 201-392-2467

**The Township of North Bergen** comprises a land area of 5.4 square miles and is bounded by Bergen County to the north, the Hudson River to the east, Jersey City, West New York and Guttenberg to the south and the Hackensack River, Union City and Secaucus to the west. North Bergen separated from Bergen Township in 1843. The 167-acre **James J. Braddock County Park** is located on Kennedy Boulevard East in North Bergen.

# SECAUCUS

---

<b>Address:</b>	Town of Secaucus Municipal Government Center 1203 Paterson Plank Road Secaucus, NJ 07094 <a href="http://www.Secaucusnj.org">www. Secaucusnj.org</a>
<b>Population:</b>	15,931
<b>Area:</b>	5.8 square miles
<b>City Hall Phone #:</b>	201-330-2000
<b>City Hall FAX #:</b>	201-330-8352
<b>Police Phone #:</b>	201-330-2060
<b>Fire Phone #:</b>	201-330-2060
<b>Form Of Government:</b>	Mayor-Council
<b>Mayor:</b>	Michael Gonnelli
<b>Council Members:</b>	John Bueckner James Clancy Robert Costantino Gary Jeffas William McKeever Susan Pirro

**Secaucus** (Sarakus) was so named by its original inhabitants, the Lenni Lenape Indians, meaning the “Island of Snakes”. The town was incorporated in 1900 following its separation from North Bergen Township. Secaucus, with a land area of 5.8 square miles, is bounded by the Hackensack River to the north, west, and south and North Bergen and Jersey City to the east.

# UNION CITY

---

<b>Address:</b>	City of Union City 3715 Palisade Avenue Union City, NJ 07087 <b>Website:</b> <a href="http://www.ucnj.com">www.ucnj.com</a>
<b>Population:</b>	67,088
<b>Area:</b>	1.4 square miles
<b>City Hall Phone #:</b>	201-348-5755
<b>City Hall FAX #:</b>	201-348-5728
<b>Police Phone #:</b>	201-348-5790
<b>Fire Phone #:</b>	201-864-4400
<b>Form Of Government:</b>	Commission
<b>Mayor:</b>	Brian Stack
<b>Commissioners:</b>	Christopher Irizarry, Revenue & Finance Maryury Martinetti, Parks & Public Property Lucio Fernandez, Public Works Tilo Rivas, Public Affairs
<b>Urban Enterprise Zone:</b>	Juan Carlos Roja City of Union City 3715 Palisade Avenue Union City, NJ 07087 201-271-2350

The consolidation of the town of Union and the town of West Hoboken formed **Union City** by referendum in 1924. Union City is bounded by West New York to the north, Hoboken and Weehawken to the east, Jersey City and Hoboken to the south and North Bergen to the west. The 1.4 square mile city, entirely landlocked, is the only Hudson municipality without a waterfront. In the 1960's Union City became the home to thousands of Cuban citizens who fled the regime of Fidel Castro

# WEEHAWKEN

---

<b>Address:</b>	Township of Weehawken 400 Park Avenue Weehawken, NJ 07087 <b>Website:</b> <a href="http://www.weehawken-nj.us/">www.weehawken-nj.us/</a>
<b>Population:</b>	13,501
<b>Area:</b>	0.8 square miles
<b>City Hall Phone #:</b>	201-319-6000
<b>City Hall FAX #:</b>	201-319-0112
<b>Police Phone #:</b>	201-863-7800
<b>Fire Phone #:</b>	201-863-6610
<b>Form Of Government:</b>	Council-Manager
<b>Mayor:</b>	Richard F. Turner
<b>Council Members:</b>	Carmela Silvestri-Ehret Rosemary Lavagnino Robert J. Sosa Robert Zucconi

**Weehawken** was formed from portions of Hoboken and North Bergen Township in 1859 and is bounded on the north by West New York, the Hudson River to the east, Hoboken to the south and Union City to the west. Comprising an area of 0.78 square miles, Weehawken is situated atop the Palisade Rock formation and has elevations up to 150 feet offering spectacular views of the Hudson River and the New York City Skyline.

# WEST NEW YORK

---

**Address:** Town of West New York  
428 - 60<sup>th</sup> Street  
West New York, NJ 07093  
**Website:** [www.westnewyorknj.com](http://www.westnewyorknj.com)

**Population:** 45,768  
**Area:** 0.9 square miles

**City Hall Phone #:** 201-295-5200  
**City Hall FAX #:** 201-861-2797

**Police Phone #:** 201-295-5000  
**Fire Phone #:** 201-864-1212

**Form Of Government:** Commission

**Mayor:** Felix E. Rogue

**Commissioners:** Count J. Wiley  
Caridad Rodriguez  
FlorD' Aliza Frias  
Ruben Vargas

**Urban Enterprise Zone:** Alain Gomez/ Michael Parkes  
Town of West New York  
440 60<sup>th</sup> Street  
West New York, NJ 07093  
201-295-5289

**The Town of West New York** was incorporated in 1898 following its separation from Union City. The 0.9 square mile town is located on top of the Palisade Rock formation and is bounded by Guttenberg to the north, the Hudson River to the east, Union City and Weehawken to the south and North Bergen to the west. At 42,361 persons per square mile, it is the second most densely populated municipality in the state.